





# Apt 7 Tuscany House, 19 Dickenson Street, Manchester, M1 4LX

Jordan Fishwick presents this 1st Floor two bedroom apartment in the Tuscany house which is located between Oxford Rd and Princess St and is tucked away on a quiet side street. Briefly comprising of an entrance hallway, large separate living room, modern fitted kitchen with fridge/freezer, oven and hob, two double bedrooms with master en-suite. Three piece bathroom suite. No Parking. No Chain.. Mortgage Buyers Welcome.

## Price £239,950

### Viewing arrangements

Viewing strictly by appointment through the agent  
245 Deansgate, Manchester, M3 4EN 0161 833 9499 opt 3

### The Building

Situated in a desirable area of Manchester, Tuscany House is close to local amenities, transport links, and the vibrant culture that the city has to offer. Whether you are a first-time buyer, a young professional, or looking to downsize, this flat presents an excellent opportunity to enjoy city living in a stylish and comfortable environment.

### Kitchen

8'7" x 10'10"

Modern wall and base units with complimentary kitchen worktop, tiled splashback, integrated fridge/freezer, hob/oven and extractor fan.

### Living Room

15'1" x 16'4"

Spacious lounge with laminate flooring, electric heater, spot lighting, UVC window., electrical power sockets, T.V access points.

### Bedroom One

6'11" x 20'2"

Fitted carpet, spot lighting, UPVC window, electric heater, electrical power sockets, access to en-suite.

### En-Suite

8'5" x 5'9"

En-closed shower cubicle with shower attachment and mixer, part tiled, low level w.c, hand wash basin, extractor fan, spot lighting.

## Bedroom Two

10'0" x 16'4"

Fitted carpet, spot lighting, UPVC window, electric heater, electrical power sockets.

## Bathroom

9'4" x 4'9"

Modern updated bathroom with part tiled walls, laminate flooring, shower attachment with mixer, low level w.c, hand wash basin, extractor fan, spot lighting.

## Additional Information

Annual Service Charge- £2,763.24

Ground Rent- Pepper Corn

Leasehold- 999 years from 2000

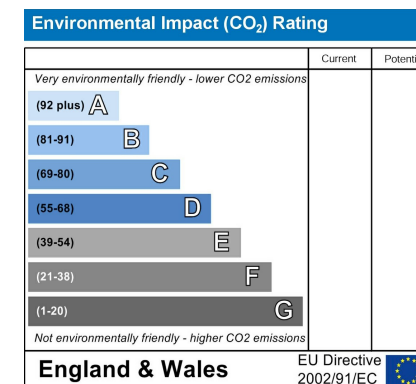
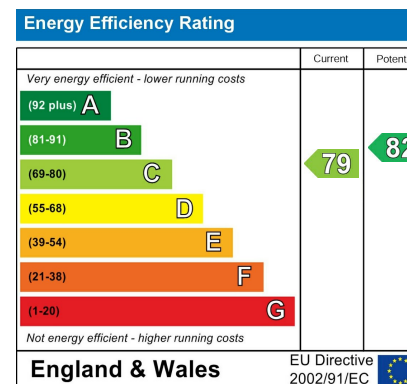
Council Tax Band- D

EPC - C

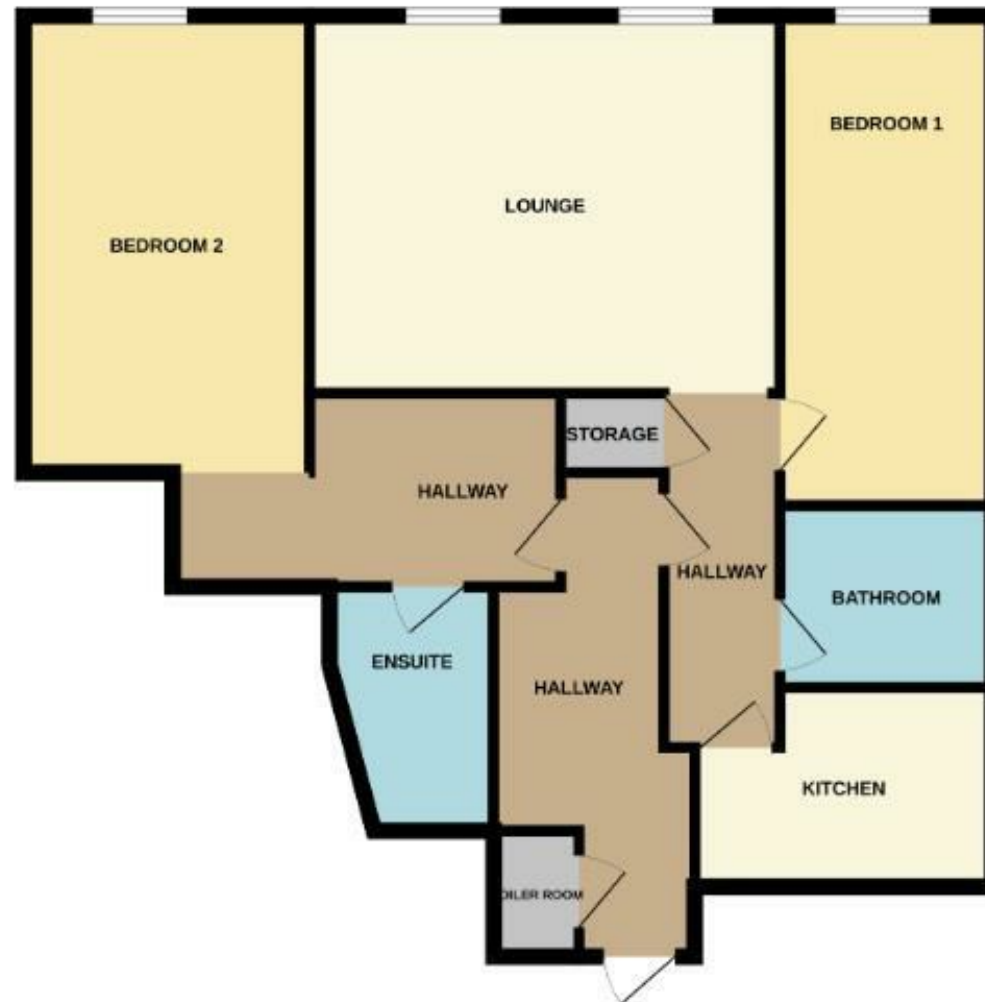
BLOCK MANAGEMENT : Zenith

## Agents Notes

To be able to purchase a property in the United Kingdom all agents have a legal requirement to conduct Identity checks on all customers involved in the transaction to fulfil their obligations under Anti Money Laundering regulations. We outsource this check to a third party and a charge will apply. Ask the branch for further details.







These particulars are believed to be accurate but they are not guaranteed and do not form a contract. Neither Jordan Fishwick nor the vendor or lessor accept any responsibility in respect of these particulars, which are not intended to be statements or representations of fact and any intending purchaser or lessee must satisfy himself by inspection or otherwise as to the correctness of each of the statements contained in these particulars. Any floorplans on this brochure are for illustrative purposes only and are not necessarily to scale.

Offices at: Chorlton, Didsbury, Disley, Hale, Glossop, Macclesfield, Manchester Deansgate, Manchester Whitworth Street, New Mills, Sale, Wilmslow and Withington

245 Deansgate, Manchester, M3 4EN

0161 833 9499 opt 3

[manchester@jordanfishwick.co.uk](mailto:manchester@jordanfishwick.co.uk)  
[www.jordanfishwick.co.uk](http://www.jordanfishwick.co.uk)



